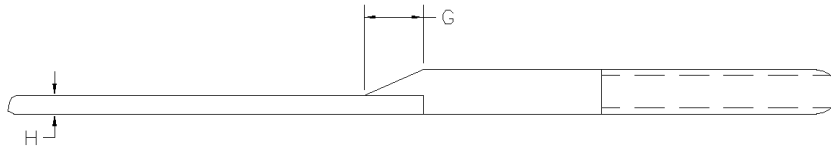
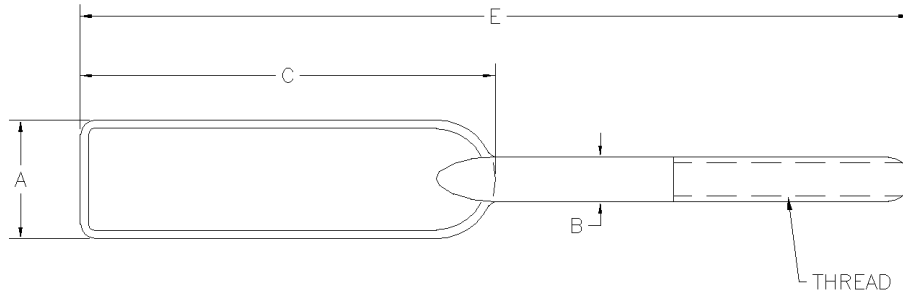


Tank Strap Ends



CLEVELAND PART NO.	A	*B	C	D	E	F	G	H	THREADS
+2784-A	1.000	.375	3.500	3.500	7.000	2.000	.50	.156	3/8-16 UNC 2A
+2784-B	1.000	.375	3.500	3.500	7.000	2.000	.500	.156	3/8-24 UNC 2A
2784-D	1.250	.500	3.000	3.750	6.750	3.250	.156	.156	1/2-20UNC 2A

Note:

*Blank B Dimensions to be
+.031/.000

* Not stocked. Priced on
application.